

PF Series PRE-FILL VALVES (Flange-clamped type)

Ordering Code

PF - 80 - FT - 20

Design No:
20

Flange Kits
FPT: With P,T Port Flanges
FP: With P Port Flanges
FT: With T Port Flanges

Valve Size
80: 3" 125: 5"
90: 3-1/2" 150: 6"
100: 4"

Series No.
Pre-fill Valves (Flange-clamped type)

Ratings

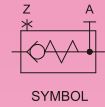
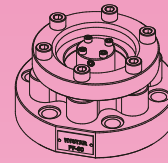
Series No.	Size	Model	Max. Pres. bar	Cracking Pres.	Max. Flow lpm	Weight kg
PF Type Pre-Fill Valves	3"	PF-80	400	250bar	0.12	8
	3-1/2"	PF-90	650		0.12	11.5
	4"	PF-100	1000		0.12	14.5
	5"	PF-125	1600		0.12	23
	6"	PF-150	2500		0.13	27

Attachment Soc. Hd. Cap Screw FP Flange Mounting

Model	Soc. Hd. Cap Screw	Weight
PF-80	M16x55Lx6pc	6.5
PF-90	M18x65Lx6pc	9
PF-100	M20x70Lx6pc	14.5
PF-125	M20x80Lx12pc	25.2
PF-150	M20x95Lx16pc	28

FT Flange Mounting

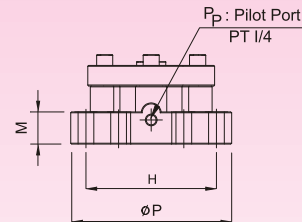
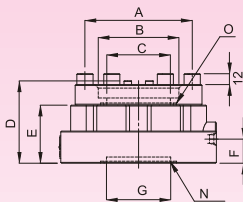
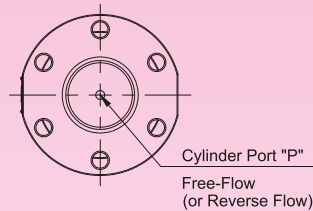
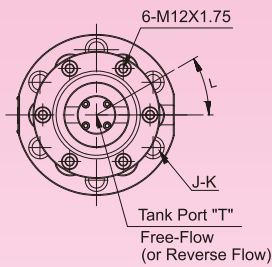
Model	Soc. Hd. Cap Screw	Weight
PF-80	M12x40Lx6pc	2.3
PF-90	M12x40Lx6pc	2.8
PF-100	M12x40Lx6pc	2.8
PF-125	M12x50Lx6pc	4
PF-150	M16x50Lx8pc	8



The PF pre-fill valves are hydraulic pilot operated check valves for a fast filling and discharging of cylinders. They allow the flow from IN (tank) to OUT (cylinder) stopping the reverse flow if the pilot pressure is not supplied through port PP.

They are available in different sizes, for in-line mounting or with flange for direct assembling to the cylinder.

PF-**



Model	A	B	C	D	E	F	G	H	I	J	K	L	M	N	O	P
PF-80	120 (4.72)	90 (3.54)	71 (2.79)	92 (3.62)	65 (2.55)	27 (1.06)	72 (2.83)	146 (5.74)	PT1/4	6 (.23)	17.5 (.68)	30 (1.18)	33 (1.29)	G80	G85	180 (7.08)
PF-90	135 (5.31)	101.5 (3.99)	89 (3.50)	119 (4.68)	72 (2.83)	27 (1.06)	88 (3.46)	165 (6.49)	PT1/4	6 (.23)	17.5 (.68)	30 (1.18)	42 (1.65)	G100	G100	200 (7.87)
PF-100	148 (5.82)	115.5 (4.54)	108 (4.25)	133 (5.23)	74 (2.91)	32 (1.25)	106 (4.17)	191 (7.51)	PT1/4	6 (.23)	17.5 (.68)	30 (1.18)	44 (1.73)	G115	G115	230 (9.05)
PF-125	175 (6.88)	141 (5.13)	130.5 (5.13)	165 (6.49)	85 (3.34)	43 (1.69)	130 (5.11)	230 (9.05)	PT1/4	12 (.47)	22 (.87)	15 (.59)	52 (2.04)	G140	G140	270 (10.6)
PF-150	200 (7.87)	167 (6.57)	155 (6.10)	204 (8.03)	105 (4.13)	45 (1.77)	168 (6.61)	260 (10.2)	PT3/8	16 (.62)	22 (.87)	11.25 (.44)	64 (2.51)	G180	G180	300 (11.8)