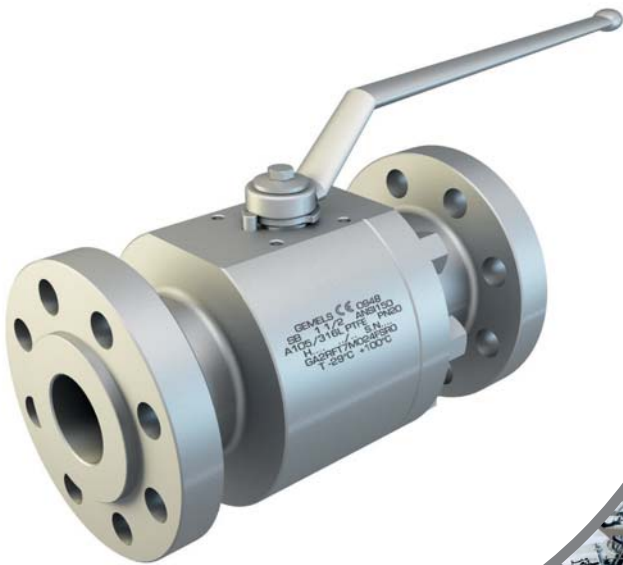


# + SBF

## 2-WAY HIGH PRESSURE BALL VALVES



### CARBON STEEL

- Type: ball valve SBF ANSI B16.5 
- Body: round
- Material: A105/F316
- Ball seats: from DN13 up to DN150
- O-Rings: NBR, FKM, EPDM, MVQ
- Operating pressure: 20 Bar - 50 Bar - 100 Bar  
150 Bar - 250 Bar - 420 Bar
- Antistatic device
- Fire safe BS 6755

### SBF ANSI600 2" DN50 FB A105 F316 RPTFE NBR RF

| Type and way of valve | Valves dimension of pressure (lbs) | Inch             | Nominal dimension from DN13 up to DN150 | Bore        | Body material | Stem material | Ball seat material | Adapter and stem seal material | Flanged |
|-----------------------|------------------------------------|------------------|---|-------------|---------------|---------------|--------------------|--------------------------------|---------|
| SBF                   | ANSI2500                           | from 1/2 up to 6 | up to DN150                             | FB          | A105          | A105          | RPTFE              | NBR                            | RF      |
| Split body            | ANSI1500                           |                  |   | full bore   | LF2           | LF2           | PEEK               | FKM                            | RTJ     |
| floating              | ANSI900                            |                  |   | RB          |               | F316          | NYLON              | EPDM                           | BW      |
| bolted body           | ANSI600                            |                  |   | reduce bore |               | F51           | DEVLON             | MVQ                            | FF      |
|                       | ANSI300                            |                  |   |             |               | F304          | MET-TO-MET         |                                |         |
|                       | ANSI150                            |                  |   |             |               |               |                    |                                |         |

### STAINLESS STEEL

- Type: ball valve SBF ANSI B16.5 
- Body: round
- Material: F316/F51
- Ball seats: from DN13 up to DN150
- O-Rings: NBR, FKM, EPDM, MVQ
- Operating pressure: 20 Bar - 50 Bar - 100 Bar  
150 Bar - 250 Bar - 420 Bar
- Antistatic device
- Fire safe BS 6755

### SBF ANSI600 2" DN50 FB F316 F51 RPTFE NBR RF

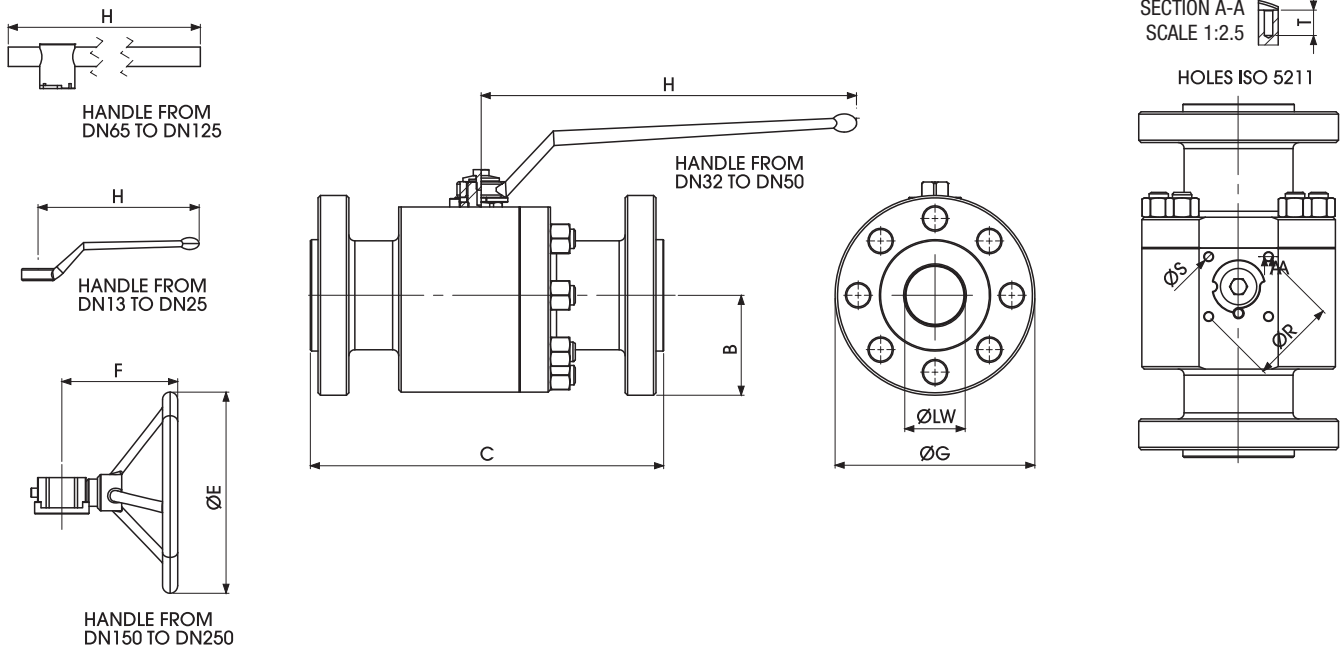
| Type and way of valve | Valves dimension of pressure (lbs) | Inch             | Nominal dimension from DN13 up to DN150 | Bore        | Body material | Stem material | Ball seat material | Adapter and stem seal material | Flanged |
|-----------------------|------------------------------------|------------------|---|-------------|---------------|---------------|--------------------|--------------------------------|---------|
| SBF                   | ANSI2500                           | from 1/2 up to 6 | up to DN150                             | FB          | F316          | A105          | RPTFE              | NBR                            | RF      |
| Split body            | ANSI1500                           |                  |   | full bore   | F51           | F316          | PEEK               | FKM                            | RTJ     |
| floating              | ANSI900                            |                  |   | RB          | F304          | F51           | NYLON              | EPDM                           | BW      |
| bolted body           | ANSI600                            |                  |   | reduce bore |               | F304          | DEVLON             | MVQ                            | FF      |
|                       | ANSI300                            |                  |   |             |               |               | MET-TO-MET         |                                |         |
|                       | ANSI150                            |                  |   |             |               |               |                    |                                |         |

SBF



# + SBF150 2-WAY HIGH PRESSURE BALL VALVES

Specialist in Ball Valves



## SPLIT BODY ANSI150 PN20 FULL BORE

| COMPONENTS             | MATERIAL            | MIN/MAX TEMP. (°C) |
|------------------------|---------------------|--------------------|
| <b>BODY AND FLANGE</b> | ASTM A105           | -20°+120°          |
|                        | ASTM A105N          | -29°+120°          |
|                        | ASTM A182 F316      | -60°+230°          |
|                        | ASTM A350 LF2       | -40°+100°          |
| <b>STEM</b>            | ASTM A479 Tp316     | -60°+230°          |
| <b>BALL</b>            | ASTM A182 F316      | -60°+230°          |
| <b>STEM SEALS</b>      | PTFE                | -196°+230°         |
|                        | GRAPHITE            | -                  |
| <b>BALL SEATS</b>      | RPTFE               | -196°+230°         |
|                        | PEEK                | -50°+250°          |
|                        | NYLON               | -40°+90°           |
|                        | DEVLON              | -40°+150°          |
|                        | METAL-TO-METAL      | -60°+230°          |
| <b>O-RING</b>          | NBR                 | -30°+100°          |
|                        | FKM                 | -40°+200°          |
|                        | EPDM                | -50°+150°          |
|                        | MVQ                 | -50°+150°          |
| <b>STUD/NUT</b>        | ASTM A193 B7/Gr. 2H |                    |
|                        | ASTM A193 B8/Gr. 8  |                    |
|                        | ASTM A320 L7/Gr. 7  |                    |

## PROVISIONS

API-6D ANSI B16.34 Specification for pipeline valves  
 API 598 Valve inspection and test  
 ANSI B.16.34 Steel valves Flanged and butt welding ends  
 ANSI B16.5 Steel pipe flanges and flanged fittings  
 ANSI B16.10 Face to face and end to end dimensions of ferrous valves  
 ASTM American society for testing materials  
 BS 6755 Testing of valves  
 NACE MR-01-75 Sulfide stress cracking resistant mettalic materials for oil field equipment  
 UNI EN ISO 9001 quality system  
 DIN/ISO 5211 for mounting  
 BS-5351 steel ball valves for the petroleum, petrochemical and allied industries

# + SBF150 2-WAY HIGH PRESSURE BALL VALVES

www.gemels.it

## SBF 150 FB

Standard

| TYPE   | PN    | INCH  | ØLW | B     | C RF | C RTJ | ØG    | H   | ØR  | ØS  | T  | ISO5211 |
|--------|-------|-------|-----|-------|------|-------|-------|-----|-----|-----|----|---------|
| SBF150 | 2 Mpa | 1/2   | 13  | 44,5  | 108  | 119   | 89    | 111 | 36  | M5  | 6  | F03     |
| SBF150 | 2 Mpa | 3/4   | 20  | 49,25 | 117  | 130   | 98,5  | 200 | 42  | M5  | 6  | F04     |
| SBF150 | 2 Mpa | 1     | 25  | 54    | 127  | 140   | 108   | 200 | 50  | M6  | 8  | F04     |
| SBF150 | 2 Mpa | 1 1/4 | 32  | 58,75 | 140  | 153   | 117,5 | 200 | 50  | M6  | 8  | F05     |
| SBF150 | 2 Mpa | 1 1/2 | 40  | 63,5  | 165  | 178   | 127   | 300 | 50  | M6  | 8  | F05     |
| SBF150 | 2 Mpa | 2     | 49  | 75    | 178  | 191   | 150   | 300 | 50  | M6  | 8  | F05     |
| SBF150 | 2 Mpa | 2 1/2 | 63  | 89    | 191  | 203   | 178   | 600 | 70  | M8  | 13 | F10     |
| SBF150 | 2 Mpa | 3     | 74  | 95    | 203  | 216   | 190   | 650 | 70  | M8  | 13 | F10     |
| SBF150 | 2 Mpa | 4     | 100 | 115   | 229  | 242   | 230   | 650 | 102 | M10 | 15 | F10     |
| SBF150 | 2 Mpa | 6     | 150 | 139,8 | 394  | 407   | 279,5 | -   | 125 | M12 | 15 | F12     |

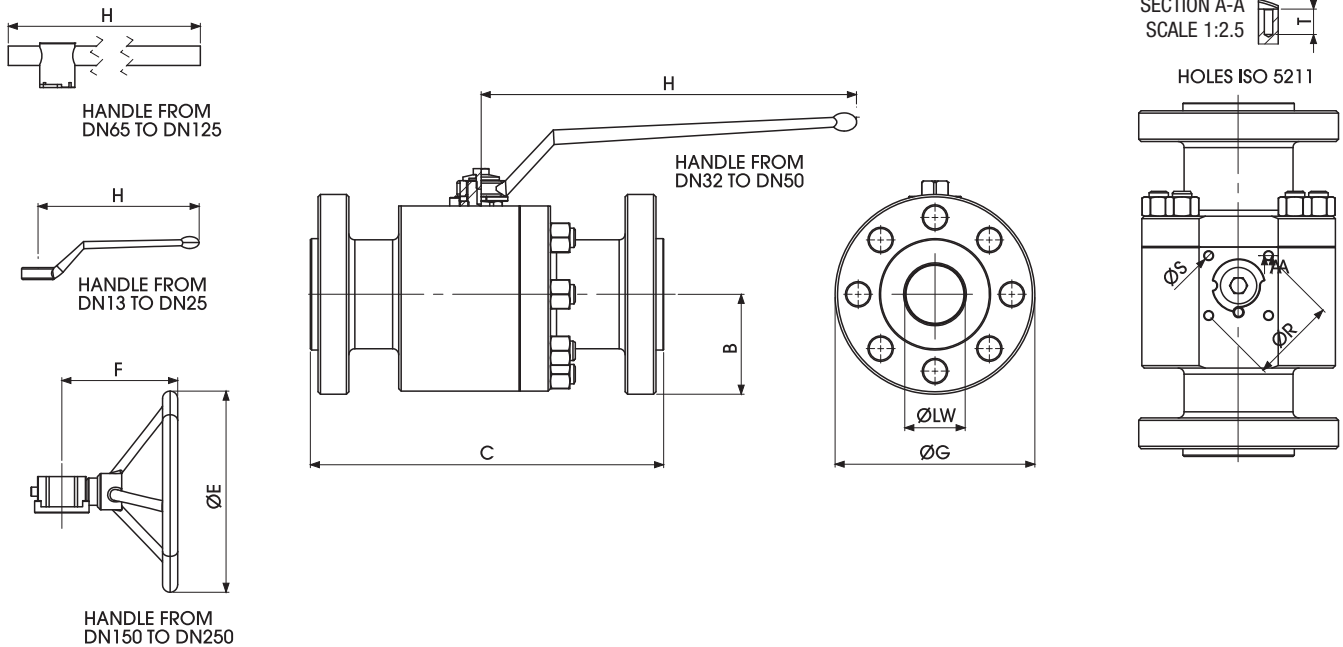
## SBF 150 RB

Standard

| TYPE   | PN    | INCH        | ØLW | B     | C RF | C RTJ | ØG    | H   | ØR  | ØS  | T  | ISO5211 |
|--------|-------|-------------|-----|-------|------|-------|-------|-----|-----|-----|----|---------|
| SBF150 | 2 Mpa | 3/4x1/2     | 13  | 49,25 | 117  | 130   | 98,5  | 111 | 36  | M5  | 6  | F03     |
| SBF150 | 2 Mpa | 1x3/4       | 20  | 54    | 127  | 140   | 108   | 200 | 42  | M5  | 6  | F04     |
| SBF150 | 2 Mpa | 1 1/4x1     | 25  | 58,75 | 140  | 153   | 117,5 | 200 | 42  | M5  | 6  | F04     |
| SBF150 | 2 Mpa | 1 1/2x1 1/4 | 32  | 63,5  | 165  | 178   | 127   | 200 | 42  | M6  | 6  | F05     |
| SBF150 | 2 Mpa | 2x1 1/2     | 40  | 75    | 178  | 191   | 150   | 300 | 50  | M6  | 8  | F05     |
| SBF150 | 2 Mpa | 2 1/2x2     | 49  | 89    | 191  | 203   | 178   | 300 | 50  | M6  | 8  | F10     |
| SBF150 | 2 Mpa | 3x2 1/2     | 63  | 95    | 203  | 216   | 190   | 300 | 50  | M6  | 8  | F10     |
| SBF150 | 2 Mpa | 4x3         | 74  | 114,5 | 229  | 242   | 229   | 600 | 102 | M10 | 15 | F10     |
| SBF150 | 2 Mpa | 6x4         | 100 | 139,8 | 394  | 407   | 279,5 | -   | 125 | M12 | 17 | F12     |
| SBF150 | 2 Mpa | 8x6         | 150 | 171,5 | 457  | 470   | 343   | -   | 125 | M12 | 17 | F12     |

# + SBF300 2-WAY HIGH PRESSURE BALL VALVES

Specialist in Ball Valves



## SPLIT BODY ANSI300 PN50 FULL BORE

| COMPONENTS             | MATERIAL            | MIN/MAX TEMP. (°C) |
|------------------------|---------------------|--------------------|
| <b>BODY AND FLANGE</b> | ASTM A105           | -20°+120°          |
|                        | ASTM A105N          | -29°+120°          |
|                        | ASTM A182 F316      | -60°+230°          |
|                        | ASTM A350 LF2       | -40°+100°          |
| <b>STEM</b>            | ASTM A479 Tp316     | -60°+230°          |
| <b>BALL</b>            | ASTM A182 F316      | -60°+230°          |
| <b>STEM SEALS</b>      | PTFE                | -196°+230°         |
|                        | GRAPHITE            | -                  |
| <b>BALL SEATS</b>      | RPTFE               | -196°+230°         |
|                        | PEEK                | -50°+250°          |
|                        | NYLON               | -40°+90°           |
|                        | DEVLON              | -40°+150°          |
|                        | METAL-TO-METAL      | -60°+230°          |
| <b>O-RING</b>          | NBR                 | -30°+100°          |
|                        | FKM                 | -40°+200°          |
|                        | EPDM                | -50°+150°          |
|                        | MVQ                 | -50°+150°          |
| <b>STUD/NUT</b>        | ASTM A193 B7/Gr. 2H |                    |
|                        | ASTM A193 B8/Gr. 8  |                    |
|                        | ASTM A320 L7/Gr. 7  |                    |

## PROVISIONS

API-6D ANSI B16.34 Specification for pipeline valves  
 API 598 Valve inspection and test  
 ANSI B.16.34 Steel valves Flanged and butt welding ends  
 ANSI B16.5 Steel pipe flanges and flanged fittings  
 ANSI B16.10 Face to face and end to end dimensions of ferrous valves  
 ASTM American society for testing materials  
 BS 6755 Testing of valves  
 NACE MR-01-75 Sulfide stress cracking resistant mettalic materials for oil field equipment  
 UNI EN ISO 9001 quality system  
 DIN/ISO 5211 for mounting  
 BS-5351 steel ball valves for the petroleum, petrochemical and allied industries

# + SBF300 2-WAY HIGH PRESSURE BALL VALVES

www.gemels.it

## SBF 300 FB

Standard

| TYPE   | PN    | INCH  | ØLW | B     | C RF | C RTJ | ØG    | H   | ØR  | ØS  | T   | ISO5211 |
|--------|-------|-------|-----|-------|------|-------|-------|-----|-----|-----|-----|---------|
| SBF300 | 5 Mpa | 1/2   | 13  | 47,6  | 140  | 151   | 95,2  | 111 | 36  | M5  | 6   | F03     |
| SBF300 | 5 Mpa | 3/4   | 20  | 58,75 | 152  | 165   | 117,5 | 120 | 50  | M5  | 6   | F04     |
| SBF300 | 5 Mpa | 1     | 25  | 62    | 165  | 178   | 123,8 | 200 | 50  | M6  | 7,5 | F04     |
| SBF300 | 5 Mpa | 1 1/4 | 32  | 66,15 | 178  | 191   | 133,3 | 300 | 50  | M6  | 8   | F04     |
| SBF300 | 5 Mpa | 1 1/2 | 40  | 77,8  | 191  | 203   | 155,6 | 300 | 50  | M16 | 8   | F05     |
| SBF300 | 5 Mpa | 2     | 49  | 82,5  | 216  | 232   | 165   | 300 | 50  | M6  | 8   | F05     |
| SBF300 | 5 Mpa | 2 1/2 | 63  | 95,25 | 241  | 257   | 190,5 | 600 | 70  | M8  | 10  | F10     |
| SBF300 | 5 Mpa | 3     | 74  | 105   | 283  | 299   | 210   | 650 | 70  | M8  | 10  | F10     |
| SBF300 | 5 Mpa | 4     | 100 | 127   | 305  | 321   | 254   | 600 | 102 | M10 | 15  | F10     |
| SBF300 | 5 Mpa | 6     | 150 | 158,8 | 403  | 419   | 317,5 | -   | 125 | M12 | 17  | F12     |

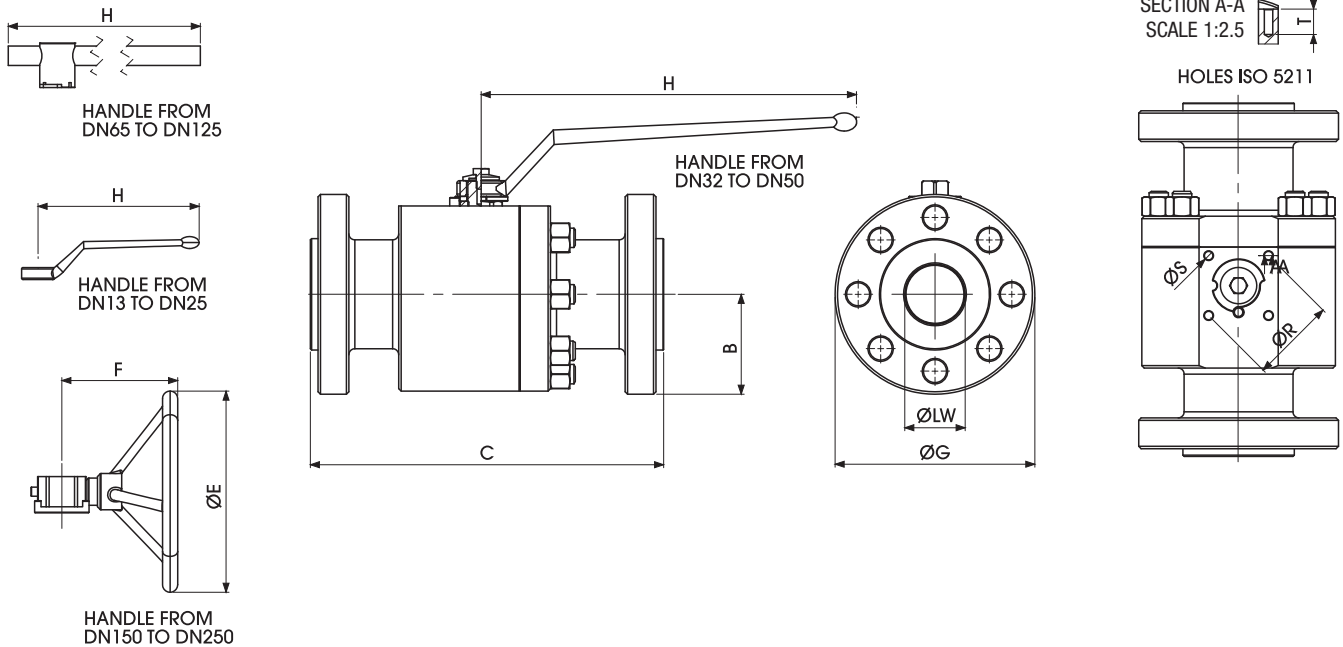
## SBF 300 RB

Standard

| TYPE   | PN    | INCH        | ØLW | B      | C RF | C RTJ | ØG    | H   | ØR  | ØS  | T   | ISO5211 |
|--------|-------|-------------|-----|--------|------|-------|-------|-----|-----|-----|-----|---------|
| SBF300 | 5 Mpa | 3/4x1/2     | 13  | 58,75  | 152  | 165   | 117,5 | 111 | 36  | M5  | 6   | F03     |
| SBF300 | 5 Mpa | 1x3/4       | 20  | 62     | 165  | 178   | 123,8 | 120 | 50  | M5  | 6   | F04     |
| SBF300 | 5 Mpa | 1 1/4x1     | 25  | 66,15  | 178  | 191   | 133,3 | 300 | 50  | M6  | 7,5 | F04     |
| SBF300 | 5 Mpa | 1 1/2x1 1/4 | 32  | 77,8   | 191  | 203   | 155,6 | 300 | 50  | M6  | 8   | F05     |
| SBF300 | 5 Mpa | 2x1 1/2     | 40  | 82,5   | 216  | 232   | 165   | 300 | 50  | M6  | 8   | F05     |
| SBF300 | 5 Mpa | 2 1/2x2     | 49  | 95,25  | 241  | 257   | 190,5 | 600 | 50  | M6  | 8   | F10     |
| SBF300 | 5 Mpa | 3x2 1/2     | 63  | 104,75 | 283  | 299   | 209,5 | 600 | 70  | M8  | 10  | F10     |
| SBF300 | 5 Mpa | 4x3         | 74  | 127    | 305  | 321   | 254   | 600 | 70  | M8  | 10  | F10     |
| SBF300 | 5 Mpa | 6x4         | 100 | 158,8  | 403  | 419   | 317,5 | -   | 102 | M10 | 15  | F12     |
| SBF300 | 5 Mpa | 8x6         | 150 | 190,5  | 502  | 518   | 381   | -   | 125 | M12 | 17  | F12     |

# + SBF600 2-WAY HIGH PRESSURE BALL VALVES

Specialist in Ball Valves



## SPLIT BODY ANSI600 PN100 FULL BORE

| COMPONENTS             | MATERIAL            | MIN/MAX TEMP. (°C) |
|------------------------|---------------------|--------------------|
| <b>BODY AND FLANGE</b> | ASTM A105           | -20°+120°          |
|                        | ASTM A105N          | -29°+120°          |
|                        | ASTM A182 F316      | -60°+230°          |
|                        | ASTM A350 LF2       | -40°+100°          |
| <b>STEM</b>            | ASTM A479 Tp316     | -60°+230°          |
| <b>BALL</b>            | ASTM A182 F316      | -60°+230°          |
| <b>STEM SEALS</b>      | PTFE                | -196°+230°         |
|                        | GRAPHITE            | -                  |
| <b>BALL SEATS</b>      | RPTFE               | -196°+230°         |
|                        | PEEK                | -50°+250°          |
|                        | NYLON               | -40°+90°           |
|                        | DEVLON              | -40°+150°          |
|                        | METAL-TO-METAL      | -60°+230°          |
| <b>O-RING</b>          | NBR                 | -30°+100°          |
|                        | FKM                 | -40°+200°          |
|                        | EPDM                | -50°+150°          |
|                        | MVQ                 | -50°+150°          |
| <b>STUD/NUT</b>        | ASTM A193 B7/Gr. 2H |                    |
|                        | ASTM A193 B8/Gr. 8  |                    |
|                        | ASTM A320 L7/Gr. 7  |                    |

## PROVISIONS

API-6D ANSI B16.34 Specification for pipeline valves  
 API 598 Valve inspection and test  
 ANSI B.16.34 Steel valves Flanged and butt welding ends  
 ANSI B16.5 Steel pipe flanges and flanged fittings  
 ANSI B16.10 Face to face and end to end dimensions of ferrous valves  
 ASTM American society for testing materials  
 BS 6755 Testing of valves  
 NACE MR-01-75 Sulfide stress cracking resistant mettalic materials for oil field equipment  
 UNI EN ISO 9001 quality system  
 DIN/ISO 5211 for mounting  
 BS-5351 steel ball valves for the petroleum, petrochemical and allied industries

# + SBF600 2-WAY HIGH PRESSURE BALL VALVES

www.gemels.it

## SBF 600 FB

Standard

| TYPE   | PN     | INCH  | ØLW | B     | C RF  | C RTJ | ØG    | H   | ØR  | ØS  | T  | ISO5211 |
|--------|--------|-------|-----|-------|-------|-------|-------|-----|-----|-----|----|---------|
| SBF600 | 10 Mpa | 1/2   | 13  | 47,6  | 165   | 163,5 | 95,25 | 111 | 36  | M5  | 6  | F03     |
| SBF600 | 10 Mpa | 3/4   | 20  | 58,75 | 190   | 190,5 | 117,5 | 200 | 50  | M5  | 6  | F04     |
| SBF600 | 10 Mpa | 1     | 25  | 62    | 216   | 216   | 124   | 200 | 50  | M6  | 10 | F05     |
| SBF600 | 10 Mpa | 1 1/4 | 32  | 66,75 | 228,5 | 228,5 | 133,5 | 300 | 50  | M6  | 10 | F05     |
| SBF600 | 10 Mpa | 1 1/2 | 40  | 77,75 | 241   | 241   | 155,5 | 300 | 50  | M6  | 10 | F05     |
| SBF600 | 10 Mpa | 2     | 49  | 82,5  | 292   | 295,3 | 165   | 300 | 70  | M8  | 12 | F05     |
| SBF600 | 10 Mpa | 2 1/2 | 63  | 95,25 | 330   | 333   | 190,5 | 600 | 70  | M8  | 12 | F10     |
| SBF600 | 10 Mpa | 3     | 74  | 105   | 356   | 359   | 210   | 650 | 70  | M8  | 13 | F10     |
| SBF600 | 10 Mpa | 4     | 100 | 136,5 | 432   | 435   | 273   | 650 | 102 | M10 | 15 | F10     |

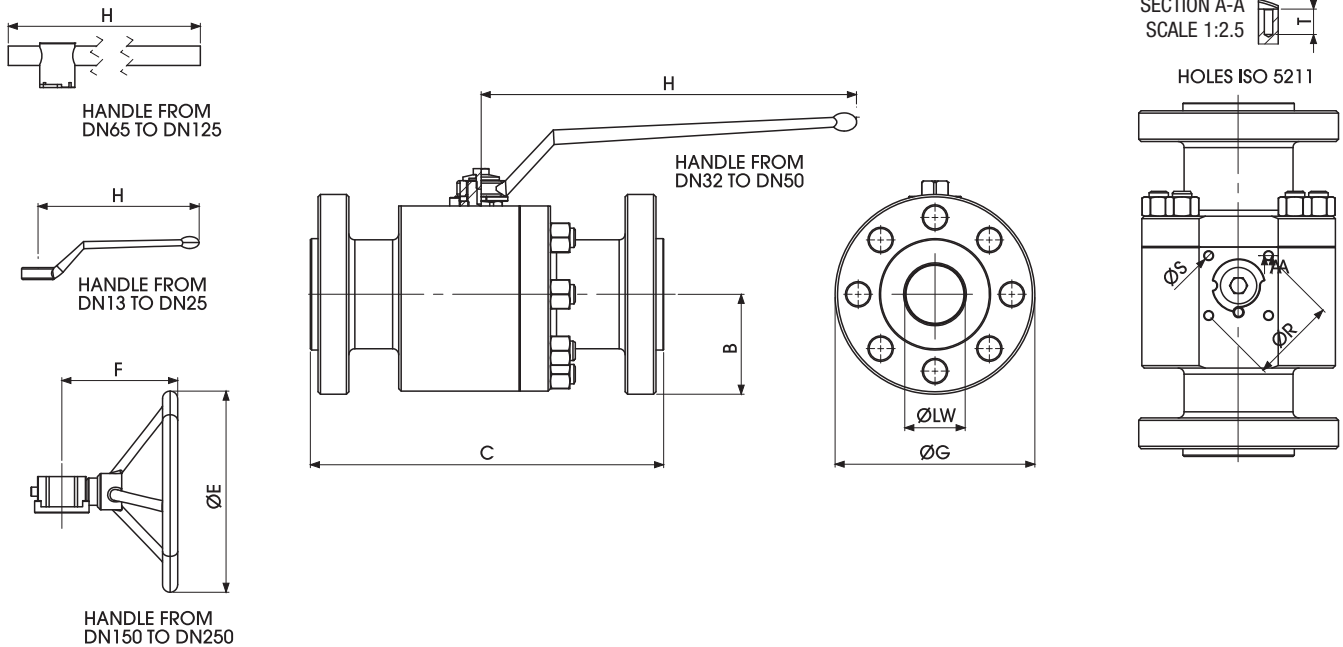
## SBF 600 RB

Standard

| TYPE   | PN     | INCH        | ØLW | B      | C RF  | C RTJ | ØG    | H   | ØR  | ØS  | T  | ISO5211 |
|--------|--------|-------------|-----|--------|-------|-------|-------|-----|-----|-----|----|---------|
| SBF600 | 10 Mpa | 3/4x1/2     | 13  | 58,75  | 190   | 190,5 | 117,5 | 111 | 36  | M5  | 6  | F03     |
| SBF600 | 10 Mpa | 1x3/4       | 20  | 62     | 216   | 216   | 124   | 120 | 50  | M5  | 6  | F04     |
| SBF600 | 10 Mpa | 1 1/4x1     | 25  | 66,75  | 228,5 | 228,5 | 133,5 | 300 | 50  | M6  | 6  | F05     |
| SBF600 | 10 Mpa | 1 1/2x1 1/4 | 32  | 77,75  | 241   | 241   | 155,5 | 300 | 50  | M6  | 6  | F05     |
| SBF600 | 10 Mpa | 2x1 1/2     | 40  | 82,5   | 292   | 295,3 | 165   | 300 | 50  | M6  | 8  | F05     |
| SBF600 | 10 Mpa | 2 1/2x2     | 49  | 95,25  | 330   | 333   | 190,5 | 600 | 70  | M8  | 15 | F10     |
| SBF600 | 10 Mpa | 3x2 1/2     | 63  | 104,75 | 356   | 359   | 209,5 | 600 | 70  | M8  | 15 | F10     |
| SBF600 | 10 Mpa | 4x3         | 74  | 136,5  | 432   | 435   | 273   | 600 | 70  | M8  | 15 | F10     |
| SBF600 | 10 Mpa | 6x4         | 100 | 177,5  | 559   | 562   | 355,5 | -   | 102 | M10 | 17 | F12     |

# + SBF900 2-WAY HIGH PRESSURE BALL VALVES

Specialist in Ball Valves



## SPLIT BODY ANSI900 PN150 FULL BORE

| COMPONENTS             | MATERIAL            | MIN/MAX TEMP. (°C) |
|------------------------|---------------------|--------------------|
| <b>BODY AND FLANGE</b> | ASTM A105           | -20°+120°          |
|                        | ASTM A105N          | -29°+120°          |
|                        | ASTM A182 F316      | -60°+230°          |
|                        | ASTM A350 LF2       | -40°+100°          |
| <b>STEM</b>            | ASTM A479 Tp316     | -60°+230°          |
| <b>BALL</b>            | ASTM A182 F316      | -60°+230°          |
| <b>STEM SEALS</b>      | PTFE                | -196°+230°         |
|                        | GRAPHITE            | -                  |
| <b>BALL SEATS</b>      | RPTFE               | -196°+230°         |
|                        | PEEK                | -50°+250°          |
|                        | NYLON               | -40°+90°           |
|                        | DEVLON              | -40°+150°          |
|                        | METAL-TO-METAL      | -60°+230°          |
| <b>O-RING</b>          | NBR                 | -30°+100°          |
|                        | FKM                 | -40°+200°          |
|                        | EPDM                | -50°+150°          |
|                        | MVQ                 | -50°+150°          |
| <b>STUD/NUT</b>        | ASTM A193 B7/Gr. 2H |                    |
|                        | ASTM A193 B8/Gr. 8  |                    |
|                        | ASTM A320 L7/Gr. 7  |                    |

## PROVISIONS

API-6D ANSI B16.34 Specification for pipeline valves  
 API 598 Valve inspection and test  
 ANSI B.16.34 Steel valves Flanged and butt welding ends  
 ANSI B16.5 Steel pipe flanges and flanged fittings  
 ANSI B16.10 Face to face and end to end dimensions of ferrous valves  
 ASTM American society for testing materials  
 BS 6755 Testing of valves  
 NACE MR-01-75 Sulfide stress cracking resistant mettalic materials for oil field equipment  
 UNI EN ISO 9001 quality system  
 DIN/ISO 5211 for mounting  
 BS-5351 steel ball valves for the petroleum, petrochemical and allied industries



# + SBF900 2-WAY HIGH PRESSURE BALL VALVES

www.gemels.it

## SBF 900 FB

Standard

| TYPE     | PN     | INCH  | ØLW | B     | C RF | C RTJ | ØG  | H   | ØR | ØS | T  | ISO5211 |
|----------|--------|-------|-----|-------|------|-------|-----|-----|----|----|----|---------|
| SBF 1500 | 25 Mpa | 1/2   | 13  | 60,5  | 216  | 216   | 121 | 110 | 36 | M5 | 15 | F03     |
| SBF 1500 | 25 Mpa | 3/4   | 19  | 65    | 229  | 229   | 130 | 120 | 50 | M6 | 15 | F05     |
| SBF 1500 | 25 Mpa | 1     | 25  | 74,5  | 254  | 254   | 149 | 200 | 50 | M6 | 15 | F05     |
| SBF 1500 | 25 Mpa | 1 1/4 | 32  | 79,5  | 279  | 279   | 159 | 300 | 70 | M8 | 15 | F07     |
| SBF 1500 | 25 Mpa | 1 1/2 | 38  | 89    | 305  | 305   | 178 | 300 | 70 | M8 | 15 | F07     |
| SBF 1500 | 25 Mpa | 2     | 49  | 107,5 | 368  | 371   | 215 | 300 | 70 | M8 | 12 | F10     |

## SBF 900 RB

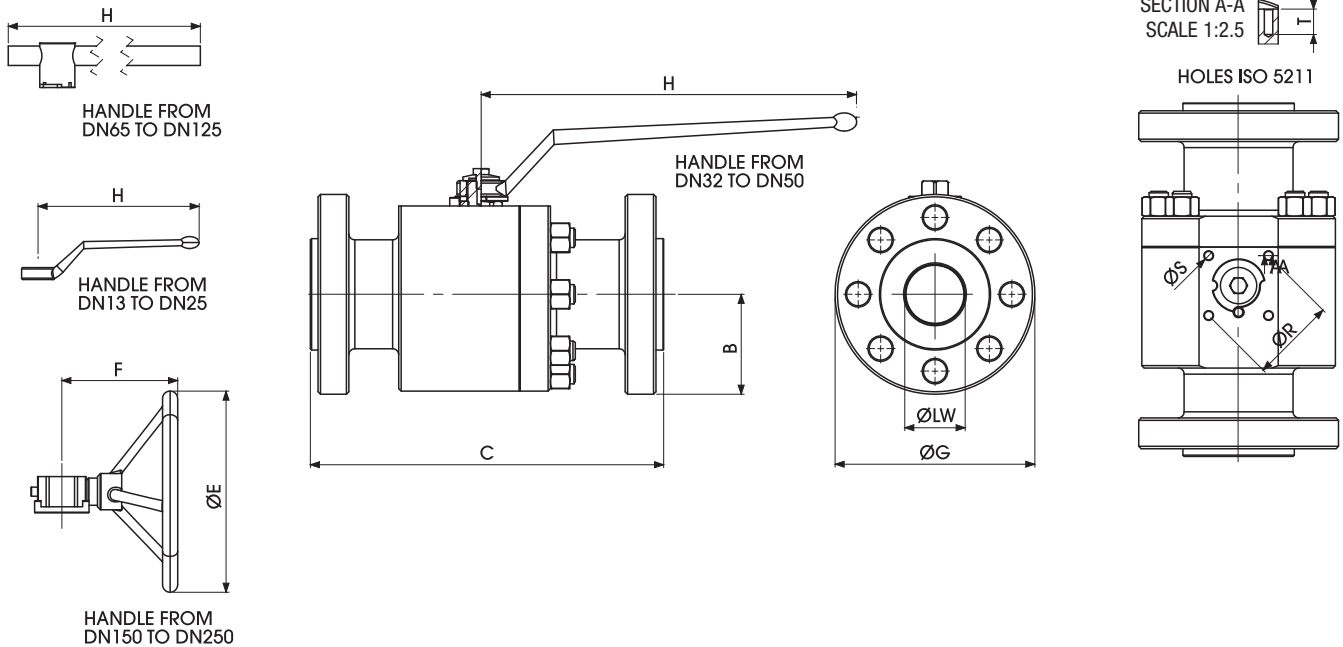
Standard

| TYPE     | PN     | INCH        | ØLW | B    | C RF | C RTJ | ØG  | H   | ØR  | ØS  | T  | ISO5211 |
|----------|--------|-------------|-----|------|------|-------|-----|-----|-----|-----|----|---------|
| SBF 1500 | 25 Mpa | 3/4x1/2     | 13  | 65   | 254  | 254   | 130 | 120 | 50  | M6  | 15 | F05     |
| SBF 1500 | 25 Mpa | 1x3/4       | 19  | 74,5 | 279  | 279   | 149 | 120 | 50  | M6  | 15 | F05     |
| SBF 1500 | 25 Mpa | 1 1/4x1     | 25  | 79,5 | 292  | 292   | 159 | 300 | 50  | M6  | 15 | F05     |
| SBF 1500 | 25 Mpa | 1 1/2x1 1/4 | 32  | 89   | 305  | 305   | 178 | 300 | 70  | M8  | 15 | F07     |
| SBF 1500 | 25 Mpa | 2x1 1/2     | 38  | 108  | 368  | 371   | 216 | 300 | 70  | M8  | 15 | F07     |
| SBF 1500 | 25 Mpa | 2 1/2x2     | 49  | 122  | 419  | 422   | 244 | 600 | 102 | M10 | 15 | F10     |

# + SBF1500

## 2-WAY HIGH PRESSURE BALL VALVES

Specialist in Ball Valves



### SPLIT BODY ANSI1500 PN250 FULL BORE

| COMPONENTS             | MATERIAL            | MIN/MAX TEMP. (°C) |
|------------------------|---------------------|--------------------|
| <b>BODY AND FLANGE</b> | ASTM A105           | -20°+120°          |
|                        | ASTM A105N          | -29°+120°          |
|                        | ASTM A182 F316      | -60°+230°          |
|                        | ASTM A350 LF2       | -40°+100°          |
| <b>STEM</b>            | ASTM A479 Tp316     | -60°+230°          |
| <b>BALL</b>            | ASTM A182 F316      | -60°+230°          |
| <b>STEM SEALS</b>      | PTFE                | -196°+230°         |
|                        | GRAPHITE            | -                  |
| <b>BALL SEATS</b>      | RPTFE               | -196°+230°         |
|                        | PEEK                | -50°+250°          |
|                        | NYLON               | -40°+90°           |
|                        | DEVLON              | -40°+150°          |
|                        | METAL-TO-METAL      | -60°+230°          |
| <b>O-RING</b>          | NBR                 | -30°+100°          |
|                        | FKM                 | -40°+200°          |
|                        | EPDM                | -50°+150°          |
|                        | MVQ                 | -50°+150°          |
| <b>STUD/NUT</b>        | ASTM A193 B7/Gr. 2H |                    |
|                        | ASTM A193 B8/Gr. 8  |                    |
|                        | ASTM A320 L7/Gr. 7  |                    |

### PROVISIONS

API-6D ANSI B16.34 Specification for pipeline valves  
 API 598 Valve inspection and test  
 ANSI B.16.34 Steel valves Flanged and butt welding ends  
 ANSI B16.5 Steel pipe flanges and flanged fittings  
 ANSI B16.10 Face to face and end to end dimensions of ferrous valves  
 ASTM American society for testing materials  
 BS 6755 Testing of valves  
 NACE MR-01-75 Sulfide stress cracking resistant mettalic materials for oil field equipment  
 UNI EN ISO 9001 quality system  
 DIN/ISO 5211 for mounting  
 BS-5351 steel ball valves for the petroleum, petrochemical and allied industries

# + SBF1500

## 2-WAY HIGH PRESSURE BALL VALVES

[www.gemels.it](http://www.gemels.it)

### SBF 1500 FB

*Standard*

| TYPE     | PN     | INCH  | ØLW | B     | C RF | C RTJ | ØG  | H   | ØR | ØS | T  | ISO5211 |
|----------|--------|-------|-----|-------|------|-------|-----|-----|----|----|----|---------|
| SBF 1500 | 25 Mpa | 1/2   | 13  | 60,5  | 216  | 216   | 121 | 110 | 36 | M5 | 15 | F03     |
| SBF 1500 | 25 Mpa | 3/4   | 19  | 65    | 229  | 229   | 130 | 120 | 50 | M6 | 15 | F05     |
| SBF 1500 | 25 Mpa | 1     | 25  | 74,5  | 254  | 254   | 149 | 200 | 50 | M6 | 15 | F05     |
| SBF 1500 | 25 Mpa | 1 1/4 | 32  | 79,5  | 279  | 279   | 159 | 300 | 70 | M8 | 15 | F07     |
| SBF 1500 | 25 Mpa | 1 1/2 | 38  | 89    | 305  | 305   | 178 | 300 | 70 | M8 | 15 | F07     |
| SBF 1500 | 25 Mpa | 2     | 49  | 107,5 | 368  | 371   | 215 | 300 | 70 | M8 | 12 | F10     |

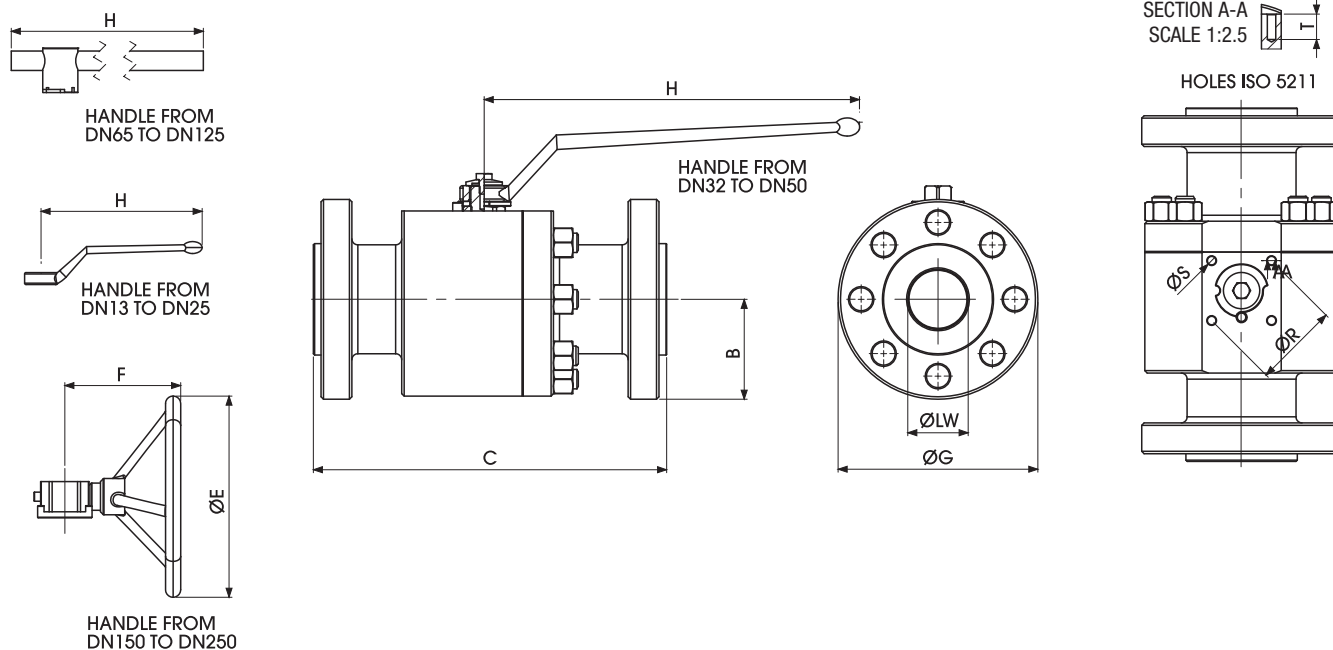
### SBF 1500 RB

*Standard*

| TYPE     | PN     | INCH        | ØLW | B    | C RF | C RTJ | ØG  | H   | ØR  | ØS  | T  | ISO5211 |
|----------|--------|-------------|-----|------|------|-------|-----|-----|-----|-----|----|---------|
| SBF 1500 | 25 Mpa | 3/4x1/2     | 13  | 65   | 254  | 254   | 130 | 120 | 50  | M6  | 15 | F05     |
| SBF 1500 | 25 Mpa | 1x3/4       | 19  | 74,5 | 279  | 279   | 149 | 120 | 50  | M6  | 15 | F05     |
| SBF 1500 | 25 Mpa | 1 1/4x1     | 25  | 79,5 | 292  | 292   | 159 | 300 | 50  | M6  | 15 | F05     |
| SBF 1500 | 25 Mpa | 1 1/2x1 1/4 | 32  | 89   | 305  | 305   | 178 | 300 | 70  | M8  | 15 | F07     |
| SBF 1500 | 25 Mpa | 2x1 1/2     | 38  | 108  | 368  | 371   | 216 | 300 | 70  | M8  | 15 | F07     |
| SBF 1500 | 25 Mpa | 2 1/2x2     | 49  | 122  | 419  | 422   | 244 | 600 | 102 | M10 | 15 | F10     |

# + SBF2500 2-WAY HIGH PRESSURE BALL VALVES

Specialist in Ball Valves



## SPLIT BODY ANSI2500 PN420 FULL BORE

| COMPONENTS             | MATERIAL            | MIN/MAX TEMP. (°C) |
|------------------------|---------------------|--------------------|
| <b>BODY AND FLANGE</b> | ASTM A105           | -20°+120°          |
|                        | ASTM A105N          | -29°+120°          |
|                        | ASTM A182 F316      | -60°+230°          |
|                        | ASTM A350 LF2       | -40°+100°          |
| <b>STEM</b>            | ASTM A479 Tp316     | -60°+230°          |
| <b>BALL</b>            | ASTM A182 F316      | -60°+230°          |
| <b>STEM SEALS</b>      | PTFE                | -196°+230°         |
|                        | GRAPHITE            | -                  |
| <b>BALL SEATS</b>      | RPTFE               | -196°+230°         |
|                        | PEEK                | -50°+250°          |
|                        | NYLON               | -40°+90°           |
|                        | DEVLON              | -40°+150°          |
|                        | METAL-TO-METAL      | -60°+230°          |
| <b>O-RING</b>          | NBR                 | -30°+100°          |
|                        | FKM                 | -40°+200°          |
|                        | EPDM                | -50°+150°          |
|                        | MVQ                 | -50°+150°          |
| <b>STUD/NUT</b>        | ASTM A193 B7/Gr. 2H |                    |
|                        | ASTM A193 B8/Gr. 8  |                    |
|                        | ASTM A320 L7/Gr. 7  |                    |

| PROVISIONS   |
|--|
| API-6D ANSI B16.34 Specification for pipeline valves                                       |
| API 598 Valve inspection and test  |
| ANSI B.16.34 Steel valves Flanged and butt welding ends                                    |
| ANSI B16.5 Steel pipe flanges and flanged fittings   |
| ANSI B16.10 Face to face and end to end dimensions of ferrous valves                       |
| ASTM American society for testing materials  |
| BS 6755 Testing of valves  |
| NACE MR-01-75 Sulfide stress cracking resistant mettalic materials for oil field equipment |
| UNI EN ISO 9001 quality system   |
| DIN/ISO 5211 for mounting  |
| BS-5351 steel ball valves for the petroleum, petrochemical and allied industries           |

# + SBF2500

## 2-WAY HIGH PRESSURE BALL VALVES

[www.gemels.it](http://www.gemels.it)

### SBF 2500 FB

*Standard*

| TYPE     | PN     | INCH  | ØLW | B     | C RF | C RTJ | ØG  | H   | R   | S   | T  | ISO5211 |
|----------|--------|-------|-----|-------|------|-------|-----|-----|-----|-----|----|---------|
| SBF 2500 | 42 Mpa | 1/2   | 13  | 66,5  | 264  | 264   | 133 | 110 | 36  | M5  | 15 | F03     |
| SBF 2500 | 42 Mpa | 3/4   | 19  | 70    | 273  | 273   | 140 | 120 | 50  | M6  | 15 | F05     |
| SBF 2500 | 42 Mpa | 1     | 25  | 79,5  | 308  | 308   | 159 | 120 | 50  | M6  | 15 | F05     |
| SBF 2500 | 42 Mpa | 1 1/4 | 32  | 92    | 356  | 356   | 184 | 300 | 70  | M8  | 15 | F07     |
| SBF 2500 | 42 Mpa | 1 1/2 | 38  | 101,5 | 387  | 387   | 203 | 300 | 70  | M8  | 15 | F07     |
| SBF 2500 | 42 Mpa | 2     | 42  | 117,5 | 451  | 454   | 235 | 300 | 102 | M10 | 15 | F10     |

### SBF 2500 RB

*Standard*

| TYPE     | PN     | INCH          | ØLW | B     | C RF | C RTJ | ØG  | H   | R   | S   | T  | ISO5211 |
|----------|--------|---------------|-----|-------|------|-------|-----|-----|-----|-----|----|---------|
| SBF 2500 | 42 Mpa | 3/4 x 1/2     | 13  | 70    | 273  | 273   | 140 | 120 | 50  | M6  | 15 | F05     |
| SBF 2500 | 42 Mpa | 1 x 3/4       | 19  | 79,5  | 308  | 308   | 159 | 120 | 50  | M6  | 15 | F05     |
| SBF 2500 | 42 Mpa | 1 1/4 x 1     | 25  | 92    | 356  | 356   | 184 | 300 | 70  | M8  | 15 | F07     |
| SBF 2500 | 42 Mpa | 1 1/2 x 1 1/4 | 32  | 101,5 | 387  | 387   | 203 | 300 | 70  | M8  | 15 | F07     |
| SBF 2500 | 42 Mpa | 2 x 1 1/2     | 38  | 117,5 | 451  | 454   | 235 | 300 | 102 | M10 | 15 | F10     |
| SBF 2500 | 42 Mpa | 2 1/2 x 2     | 42  | 133,5 | 508  | 511   | 267 | 600 | 102 | M10 | 15 | F10     |

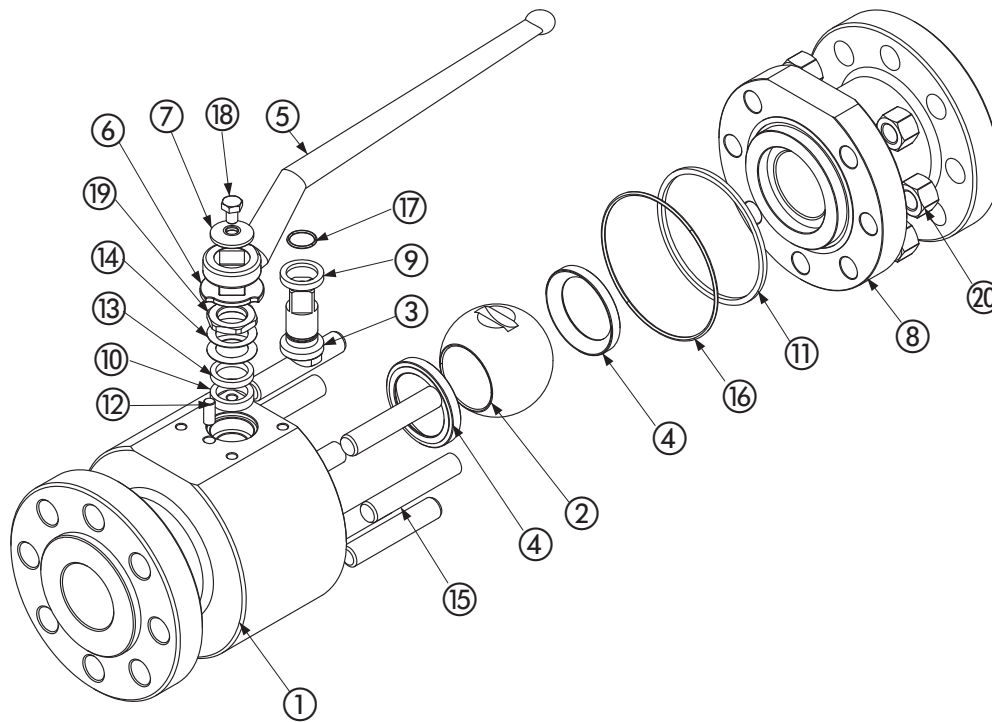




# + SBF 2-WAY HIGH PRESSURE BALL VALVES

www.gemels.it

2015 - Edition 4



## Carbon steel

| Pos | Description   | Material         | Q.tà |
|-----|---------------|------------------|------|
| 1   | Body          | 1,0570           | 1    |
| 2   | Ball          | 1,4462           | 1    |
| 3   | Stem          | 1,4462           | 1    |
| 4   | Ball seat     | PTFE             | 2    |
| 5   | Handle        | 1,0116           | 1    |
| 6   | Washer        | 1,4301           | 1    |
| 7   | Washer        | 1,4301           | 1    |
| 8   | Flange        | 1,0570           | 1    |
| 9   | Stem ring     | PTFE             | 1    |
| 10  | Up ring       | GRAPHITE         | 1    |
| 11  | Flange ring   | GRAPHITE         | 1    |
| 12  | Spine         | 1,4301           | 1    |
| 13  | Press ring    | 1,4301           | 1    |
| 14  | Spring        | 1,4301           | 2    |
| 15  | Bolts         | ASTM A193 B7     | 8    |
| 16  | Flange o-ring | NBR              | 1    |
| 17  | Stem o-ring   | NBR              | 1    |
| 18  | Screw         | DIN6921 A2       | 1    |
| 19  | Nut           | 1,4301           | 1    |
| 20  | Nut           | ASTM A194 Gr. H2 | 8    |

## Stainless steel

| Pos | Description   | Material         | Q.tà |
|-----|---------------|------------------|------|
| 1   | Body          | 1,4404           | 1    |
| 2   | Ball          | 1,4462           | 1    |
| 3   | Stem          | 1,4462           | 1    |
| 4   | Ball seat     | PTFE             | 2    |
| 5   | Handle        | 1,4301           | 1    |
| 6   | Washer        | 1,4301           | 1    |
| 7   | Washer        | 1,4301           | 1    |
| 8   | Flange        | 1,4404           | 1    |
| 9   | Stem ring     | PTFE             | 1    |
| 10  | Up ring       | GRAPHITE         | 1    |
| 11  | Flange ring   | GRAPHITE         | 1    |
| 12  | Spine         | 1,4301           | 1    |
| 13  | Press ring    | 1,4301           | 1    |
| 14  | Spring        | 1,4301           | 2    |
| 15  | Bolts         | ASTM A193 B7     | 8    |
| 16  | Flange o-ring | NBR              | 1    |
| 17  | Stem o-ring   | NBR              | 1    |
| 18  | Screw         | DIN6921 A2       | 1    |
| 19  | Nut           | 1,4301           | 1    |
| 20  | Nut           | ASTM A194 Gr. H2 | 8    |

For further special requests please consult our technical/commercial service

**On request**

- Reduced bore
- O-Ring in FKM, EPDM, HNBR, KALREZ
- Seals in PTFE, PEEK, PA612, GEMPTFE, METAL TO METAL
- Pressure class ANSI 150-300-600 900-1500-2500
- Pneumatic and electrical actuator
- Locking device

**On request**

- Reduced bore
- O-Ring in FKM, EPDM, HNBR, KALREZ
- Seals in PTFE, PEEK, PA612, GEMPTFE, METAL TO METAL
- Pressure class ANSI 150-300-600 900-1500-2500
- Pneumatic and electrical actuator
- Locking device